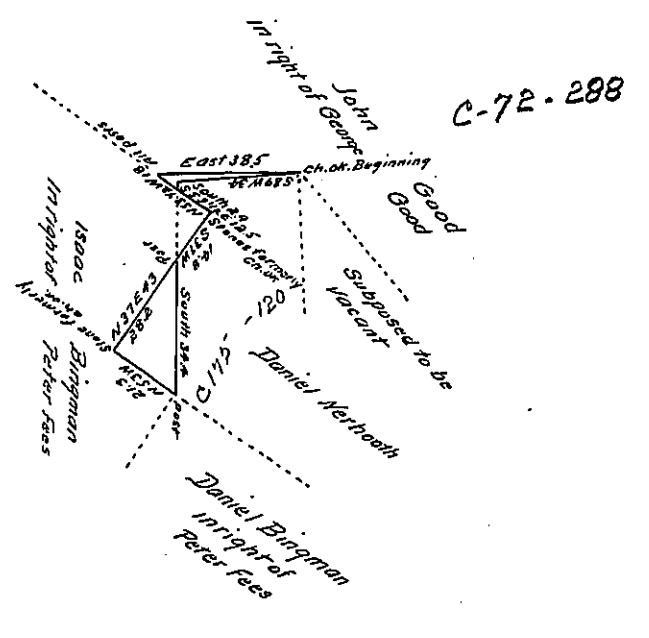


Daniel Bingman					N.	S.	E.	W.	M.D.	N.	S.
Bearings	Dis										
1 S 84 W	34.						34.0	65 6-	31 6-		75.92
2 S	29							31 6-			91.64
3 S 53 1/2 E	12.5							41 7			312.75
4 S 37 W	14.8						8.9	42 9			510.51
5 S	34.4							34 0			1169.60
6 N 53 W	21.3						17.0	17 0		882.0	
7 N 37 E	43.							25 8-		882.36	
8 N 53 1/2 W	18.						14.5	37 1-		393.26	
9 E								61 1-			
								99 6			

57.4 57.4 74.4 74.4

1489.82 2130.42  
 27670.60 A P  
 1696 320.30 (1:150 allowance)  
 1696  
 150.70



Situate In Beaver township in the County of Snyder Penna. Containing one acre and one hundred and fifty perches with the usual allowance for Roads &c. Surveyed September the 24<sup>th</sup> 1869 for Daniel Bingman on his Warrant Dated August the 10<sup>th</sup> A.D. 1868 for 20 acres.

To Jacob M. Campbell Esq  
 Surveyor General of  
 Pennsylvania

Daniel Weirick Esq C.S.

IN TESTIMONY that the above is a copy of the original remaining on file in the Department of Internal Affairs of Pennsylvania, made conformably to an Act of Assembly approved the 16th day of February, 1833, I have hereunto set my Hand and caused the Seal of said Department to be affixed at Harrisburg, this twenty-fourth day of November 1909

Henry Hower  
 Secretary of Internal Affairs.